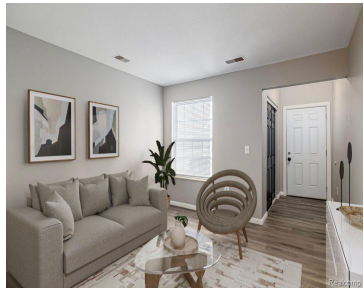
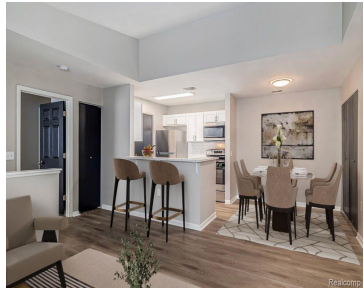
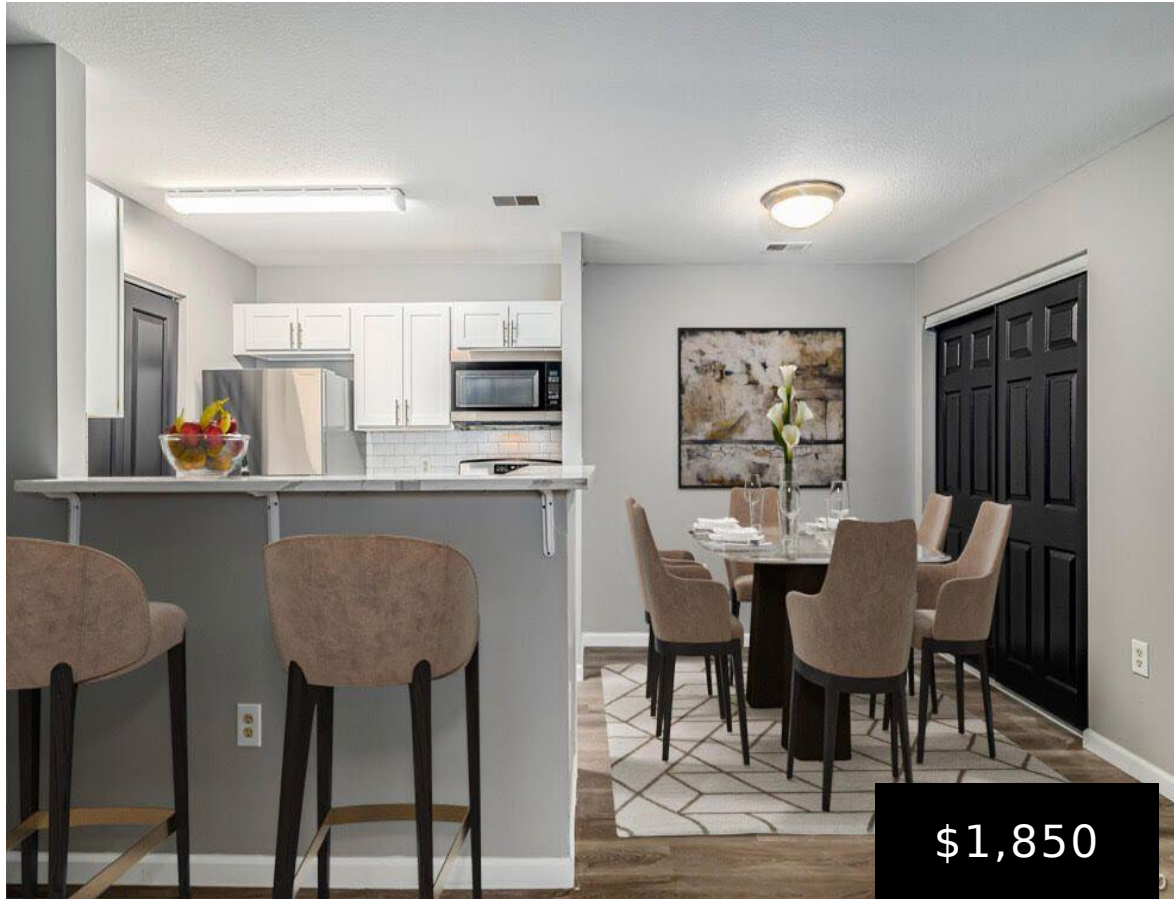


YPSILANTI TWP, MICHIGAN WASHTENAW, 48197

<https://householdrealestate.com/a/charliecook>

Ypsilanti Twp,
Michigan
Washtenaw, 48197



8980 CHARLOTTE "Section 8 Approved" Waters Edge at Tuttle Hill presents a thoughtfully designed living space featuring 3 bedrooms, 2 full baths, and a generously spacious 1,250 sq ft floor plan, complete with private entrances overlooking a serene lakeside setting. Freshly updated with new paint and brand new carpet. Residents can enjoy the comfort of central air and the presence of a sizable playground for children. Ideally situated in Ypsilanti Township at the intersection of Textile and Tuttle Hill Road. Despite its tranquil ambiance, this community is just minutes away from the bustling business and shopping districts of Ypsilanti, as well as the artistic vibrancy of downtown Ann Arbor. "Your own private Washer & Dryer hookup in unit". "Ask about our zero security deposit option"

- 3 beds
- 2.00 baths
- Condominium
- Active

Overview



Call us now

Phone: 734-347-0870
Email: Youragentcharlie@gmail.com



Status: Active

Year built: 2005

Architecture Style: Townhouse

Type: Condominium

Architecture Level: 2 Story

Date added: Added 2 years ago

Rooms

Bedrooms: 3 beds

Bathrooms: 2.00 baths

Building Details

Foundation details: Slab

Nearby Schools

School District: Lincoln Consolidated

Parking

Garage Size: No Garage

Amenities & Features

Waterfront: No

Fireplace YN: No



Call us now

Phone: 734-347-0870

Email: Youragentcharlie@gmail.com

