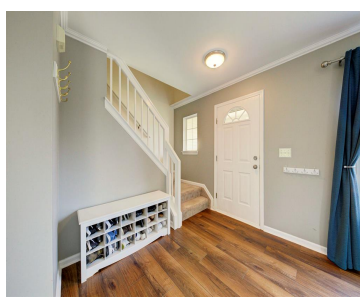
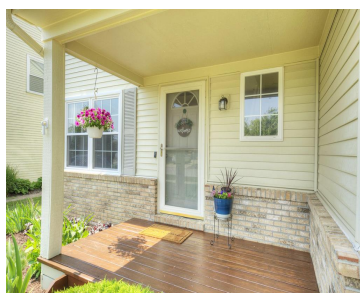


YPSILANTI TWP, MICHIGAN, WASHTENAW, 48197

<https://householdrealestate.com/a/charliecook>

Ypsilanti Twp,
Michigan,
Washtenaw, 48197



7382 Spy Glass Lane Welcome home to this inviting 3-bedroom, 2.5-bath Colonial that offers the perfect blend of comfort, style, and convenience in the desirable Amberly Grove neighborhood. Step up to the charming covered front porch and into a bright living room filled with natural light from a large picture window. A second entry from the attached two-car garage leads you directly inside, with a convenient half bath nearby. Prepare your meals in the bright kitchen with stainless steel appliances, freshly painted cabinets, and plenty of counter space. The open layout overlooks the living room and flows seamlessly into the dining area, complete with a sliding glass door to your back patio. Unwind in the warm and welcoming family room, featuring a soaring vaulted ceiling, tall windows, a gas stone fireplace, and a balcony view from upstairs. Upstairs, retreat to the spacious primary suite with a double-sink vanity and plenty of room to relax. Two additional large bedrooms offer flexibility perfect for a guest room, office, or playroom. The finished basement expands your living space with recessed lighting, a functional wet bar, and room to create your ideal hangout, workout area, or media space. Step outside to a backyard built for relaxation and entertaining. Enjoy the peaceful pond view, covered pergola, wooden swing, firepit area, and privacy-enhancing arborvitae. Beautiful landscaping ties it all together. Recent updates include Wallside Windows (back 2021, front 2016; warranties included), roof (2017), luxury vinyl plank flooring on main level (2024), fresh interior paint in neutral colors (2025), updated bathrooms, ceiling fans, and abundant storage. Ideally located near schools, shopping, expressways, DTW, Ann Arbor, and Ypsilanti, this home offers both charm and convenience. Don't miss your chance to join this friendly community schedule your private tour today!

- 3 beds
- 2.10 baths
- Residential
- Active



Call us now

Phone: 734-347-0870
Email: Youragentcharlie@gmail.com



Overview

Status: Active

Year built: 1999

Architecture Style: Colonial

Type: Residential

Architecture Level: 2 Story

Date added: Added 8 months ago

Rooms

Bedrooms: 3 beds

Bathrooms: 2.10 baths

Building Details

Basement Type: Daylight

SqFt Total Bsmt: 757

Foundation details: Basement **Exterior material:** Fenced, Gazebo, Playground

Roof: Asphalt

Nearby Schools

School District: Lincoln Consolidated

Parking

Garage features: Door Opener,Attached

Amenities & Features



Call us now

Phone: 734-347-0870

Email: Youragentcharlie@gmail.com



Cooling features: Ceiling Fan(s),Central Air **Waterfront:** No

Waterfront Frontage Feet: 66.00

Waterfront Description: Pond,Lake/River Priv

Fireplace YN: 1



Call us now

Phone: 734-347-0870

Email: Youragentcharlie@gmail.com

