

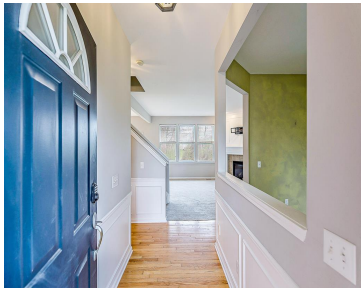
YPSILANTI TWP, MICHIGAN, WASHTENAW, 48197

<https://householdrealestate.com/a/charliecook>

Ypsilanti Twp,
Michigan,
Washtenaw, 48197



\$325,000



7329 Warwick Drive Discover the incredible potential of this 4-bedroom, 2.5-bath Colonial nestled in the highly sought-after Greene Farms community. With an open floor plan and thoughtful design, this home is an outstanding opportunity for buyers seeking both comfort and value. Step into the elegant entryway, featuring hardwood floors and wainscoting, setting the tone for the rest of the home. The kitchen boasts maple cabinets, a center island, and stainless steel appliances (new, except for the fridge), along with a spacious eating area that flows seamlessly into the great room. Here, you'll find a stunning floor-to-ceiling gas fireplace and sliders leading to a cement patio and a fantastic backyard that backs to a serene creek and walking trail. The main level also includes a dedicated office with a bay window, a convenient laundry room, and a half bath. Upstairs, the primary suite impresses with a cathedral ceiling, an ensuite bath with dual sinks, a soaking tub, a separate shower, and a large walk-in closet. Three additional bedrooms and a full bath complete the upper level. The partially finished basement provides ample storage and additional living space. Enjoy the perks of community pool privileges and a prime location just minutes from the new library, all while benefiting from lower township taxes. This home is attractively priced to sell quickly - don't wait to make it yours!

- 4 beds
- 2.10 baths
- Residential
- Coming Soon



Call us now

Phone: 734-347-0870
Email: Youragentcharlie@gmail.com



Overview

Status: Coming Soon

Year built: 2004

Architecture Style: Colonial

Type: Residential

Architecture Level: 2 Story

Date added: Added 1 week ago

Rooms

Bedrooms: 4 beds

Bathrooms: 2.10 baths

Building Details

SqFt Total Bsmt: 810

Exterior material: Playground, Pool – Community

Foundation details: Basement

Roof: Asphalt

Nearby Schools

School District: Lincoln Consolidated

Parking

Garage features: Door Opener,Attached

Amenities & Features

Cooling features: Central Air

Fireplace YN: 1

Waterfront: No

Pool: 1



Call us now

Phone: 734-347-0870

Email: Youragentcharlie@gmail.com

