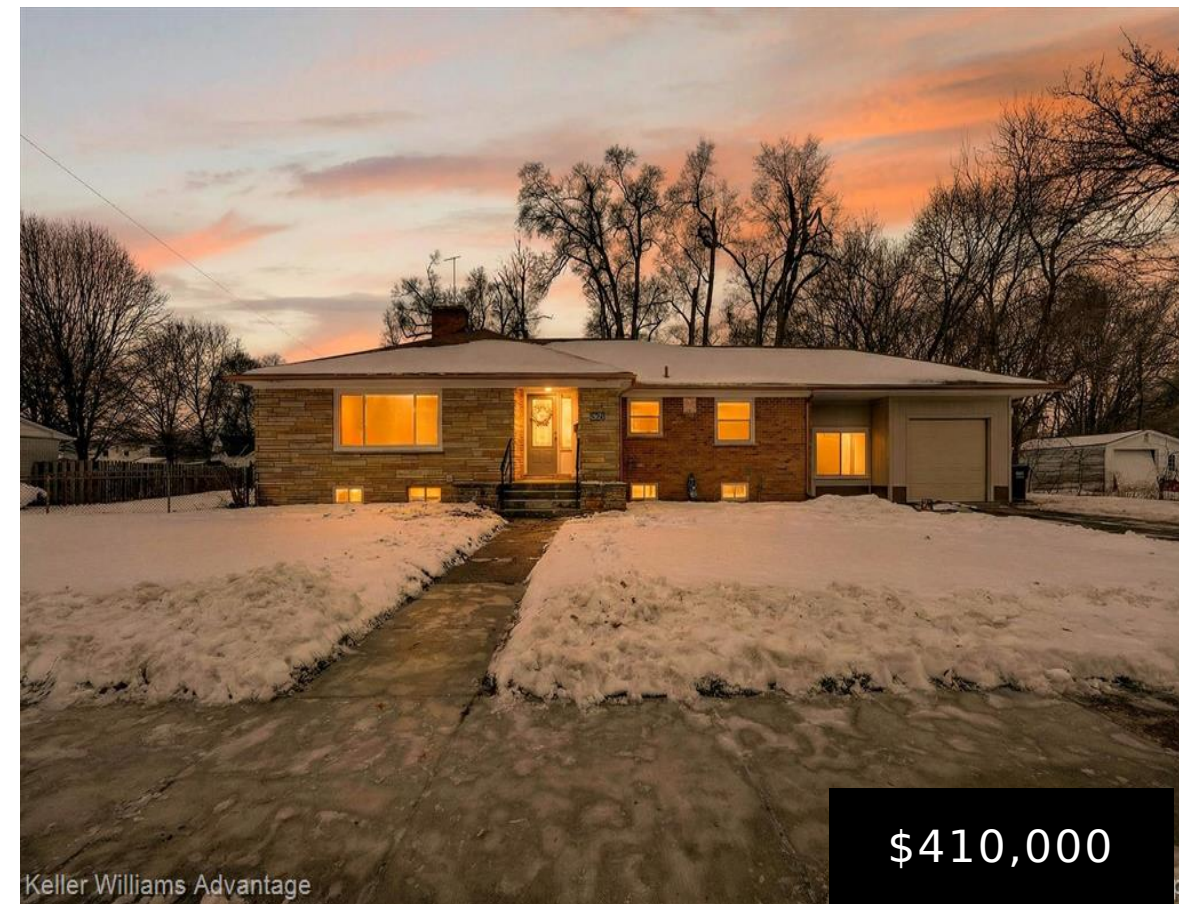


YPSILANTI, MICHIGAN, WASHTENAW, 48197

<https://householdrealestate.com/a/charliecook>

Ypsilanti, Michigan,
Washtenaw, 48197



324 S Hamilton Street Welcome to this beautifully renovated ranch in the heart of Ypsilanti, fully remodeled in 2025 and offering exceptional space, style, and versatility. With 7 spacious bedrooms and 2 full bathrooms, this expansive home is perfectly suited for large families, multi-generational living, or investors seeking strong rental potential in a prime location. From the moment you enter, you'll notice the thoughtful upgrades and modern finishes throughout. The stunning kitchen anchors the home, featuring elegant quartz countertops, quality dovetailed soft-close cabinetry, and sleek stainless-steel appliances—ideal for both everyday living and entertaining. The open, functional layout flows effortlessly and is enhanced by all-new flooring, fresh paint, contemporary fixtures, newer windows that invite in abundant natural light, and a new HVAC system for year-round comfort and efficiency. A charming breezeway adds character and versatility, complete with washer and dryer hookups and flexible space that can serve as a mudroom, storage area, or additional sitting room. The fully finished basement significantly expands the living space, offering a new full bathroom, additional bedrooms, and endless possibilities for a recreation room, media space, home office, gym, or private guest quarters. With its generous size and layout, this property also presents the exciting possibility of a duplex-style configuration, creating an excellent opportunity for rental income, house hacking, or student housing. Located just minutes from Eastern Michigan University and situated on just under a half-acre lot, the setting offers both convenience and room to enjoy outdoor space. Close to shopping, dining, parks, and major expressways, this move-in-ready home blends modern upgrades, newer windows, flexible living options, and outstanding income potential. A rare and versatile opportunity in today's market—schedule your private showing today!

- 7 beds
- 2.00 baths
- Residential
- Coming Soon



Call us now

Phone: 734-347-0870

Email: Youragentcharlie@gmail.com



Overview

Status: Coming Soon

Year built: 1955

Architecture Style: Ranch

Type: Residential

Architecture Level: 1 Story

Date added: Added 4 months ago

Rooms

Bedrooms: 7 beds

Bathrooms: 2.00 baths

Building Details

Basement Type: Daylight,Finished

Foundation details: Basement

SqFt Total Bsmt: 1855

Roof: Asphalt

Nearby Schools

School District: Ypsilanti

Parking

Garage features: Tandem,Attached

Garage Size: 1.5 Car

Amenities & Features

Cooling features: Central Air

Fireplace YN: 1

Waterfront: No

Pool: No



Call us now

Phone: 734-347-0870

Email: Youragentcharlie@gmail.com

