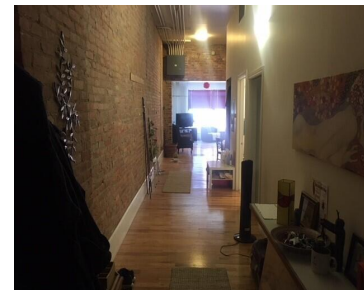


YPSILANTI, MICHIGAN, WASHTENAW, 48197

<https://householdrealestate.com/a/charliecook>

Ypsilanti, Michigan,
Washtenaw, 48197



206 W Michigan Avenue 2H Live in the Heart of Downtown Ypsilanti! Beautiful lofts right on Michigan Ave in Downtown Ypsilanti above the retail shops. This unit will be extremely sought after and will not be available for long. Located in downtown Ypsilanti. Located directly on Michigan Ave above the retail and restaurants below. You are just minutes from Ypsilanti's finest establishments including the Bellflower restaurant, Bobcat Bonnie's, Ziggy's as well as numerous salons, bars, coffee shops and retail shops. You are also very close to EMU and Depot Town, as well as the Huron River and Ypsilanti's lovely downtown parks. The Ypsilanti Library is just across the street. We welcome pets, cats are \$20/mo and dogs are \$50/mo. Additionally, residents have the option to park for free at our parking lot at the Ypsilanti Commerce Center, 301 W. Michigan, located kiddy corner from the building. Alternatively, parking passes can be purchased from Ypsilanti City Hall for access to any of the 4 downtown parking lots. The security deposit is equal to one month's rent. Schedule a tour now! ; Lease Term/Renewal: NEW CONDOMINIUM L4406 P513 UNIT 2 RENAISSANCE BUILDING SPLIT ON 07/13/2004 FROM 11-11-40-484-014, 11-11-40-484-015

- 2 beds
- 1.00 bath
- Condominium
- Active



Call us now

Phone: 734-347-0870

Email: Youragentcharlie@gmail.com



Overview

Status: Active

Architecture Level: 1 Story

Type: Condominium

Date added: Added 11 months ago

Rooms

Bedrooms: 2 beds

Bathrooms: 1.00 bath

Nearby Schools

School District: Ypsilanti

Amenities & Features

Waterfront: No



Call us now

Phone: 734-347-0870

Email: Youragentcharlie@gmail.com

