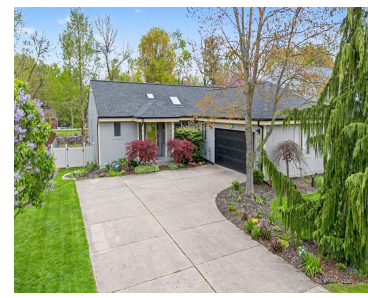


YPSILANTI, MICHIGAN, WASHTENAW, 48197

<https://householdrealestate.com/a/charliecook>

Ypsilanti, Michigan,
Washtenaw, 48197



1463 Ainsley Avenue Located in College Heights, one of Ypsi's most loved neighborhoods and an easy walk to EMU, this 1990 ranch meets all the needs. Its gracious floor plan lives larger than its square footage suggests. The living room with wood-burning fireplace and built in bookshelves overlooks the private fenced back yard with deck, abundant plantings and easy access to one of Washtenaw County's border to border trails. En-suite primary bedroom offers a quiet retreat with its vaulted ceiling, remodeled full bath and large walk-in closet. Two addl bedrooms with adjacent remodeled bath plus a potential fourth bedroom in the finished basement provide great space for office/family members and/or guests. The well-appointed kitchen opens to the dining area and also leads to first floor laundry, half bath and the 2-car plus garage. Much of basement is finished though still offers great storage. Roof new 2022 and garage door new 2025. Abundant green space lies across and east and west down Ainsley Avenue.

- 3 beds
- 2.20 baths
- Residential
- Coming Soon



Call us now

Phone: 734-347-0870

Email: Youragentcharlie@gmail.com



Overview

Status: Coming Soon

Year built: 1990

Architecture Style: Ranch

Type: Residential

Architecture Level: 1 Story

Date added: Added 1 week ago

Rooms

Bedrooms: 3 beds

Bathrooms: 2.20 baths

Building Details

SqFt Total Bsmt: 1500

Exterior material: Fenced

Foundation details: Basement

Roof: Asphalt, Shingle

Nearby Schools

School District: Ypsilanti

Parking

Garage features: Door Opener,Side Entrance,Attached

Amenities & Features

Cooling features: Ceiling Fan(s),Central Air

Fireplace YN: 1

Waterfront: No



Call us now

Phone: 734-347-0870

Email: Youragentcharlie@gmail.com

